

**FOR SALE
OR BUILD
TO SUIT**

Crosstown Industrial Park

I-244 at 129th E. Ave.
Tulsa, Oklahoma

**BUILD-TO-SUIT
WAREHOUSE**



INDUSTRIAL DEVELOPMENT LOTS FOR SALE
Large Tracts and Small Lots Available



ARGUE PROPERTIES, INC.

Duane Sadler

401 South Boston, Suite 3400

Tulsa, Oklahoma 74103

duasad@argueproperties.com

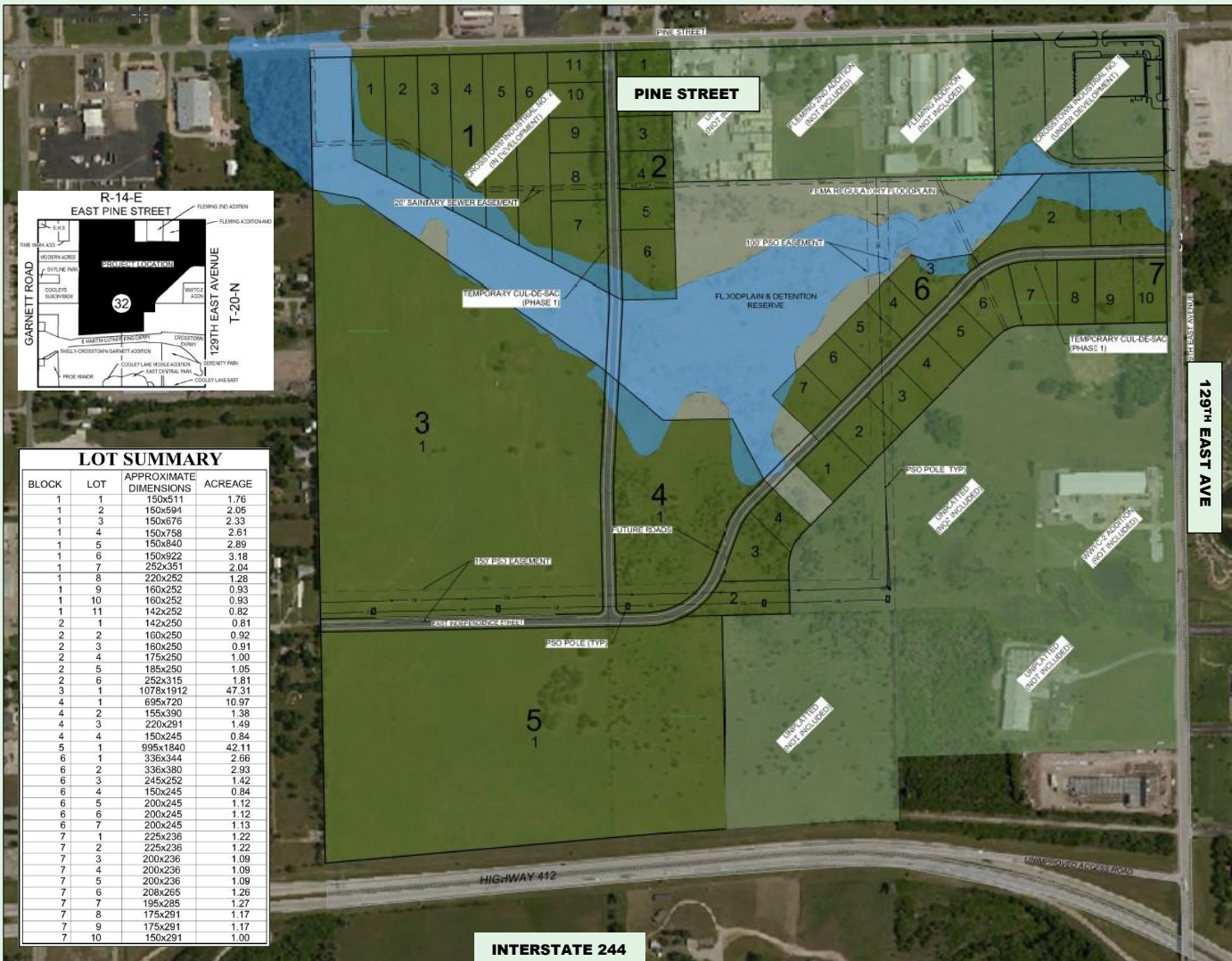
Office: 918-699-0310

Cell: 918-261-8330

Crosstown Industrial Park

I-244 at 129th East Avenue
Tulsa, Oklahoma

Development Plan



LOT SUMMARY

BLOCK	LOT	APPROXIMATE DIMENSIONS	ACREAGE
1	1	150x511	1.76
1	2	150x594	2.05
1	3	150x676	2.33
1	4	150x758	2.61
1	5	150x840	2.89
1	6	150x922	3.18
1	7	252x351	2.04
1	8	220x252	1.26
1	9	160x252	0.93
1	10	160x252	0.93
1	11	142x252	0.82
2	1	142x250	0.81
2	2	160x250	0.92
2	3	160x250	0.91
2	4	175x250	1.00
2	5	185x250	1.05
2	6	252x315	1.81
3	1	1078x1912	47.31
4	1	695x720	10.97
4	2	155x390	1.38
4	3	220x291	1.49
4	4	150x245	0.84
5	1	995x1840	42.11
6	1	336x344	2.66
6	2	336x380	2.93
6	3	245x252	1.42
6	4	150x245	0.84
6	5	200x245	1.12
6	6	200x245	1.12
6	7	200x245	1.13
7	1	225x236	1.22
7	2	225x236	1.22
7	3	200x236	1.09
7	4	200x236	1.09
7	5	200x236	1.09
7	6	208x265	1.26
7	7	195x285	1.27
7	8	175x291	1.17
7	9	175x291	1.17
7	10	150x291	1.00

ARGUE PROPERTIES, INC.
 Duane Sadler
 401 South Boston, Suite 3400
 Tulsa, Oklahoma 74103
 duasad@argueproperties.com
 Office: 918-699-0310
 Cell: 918-261-8330